

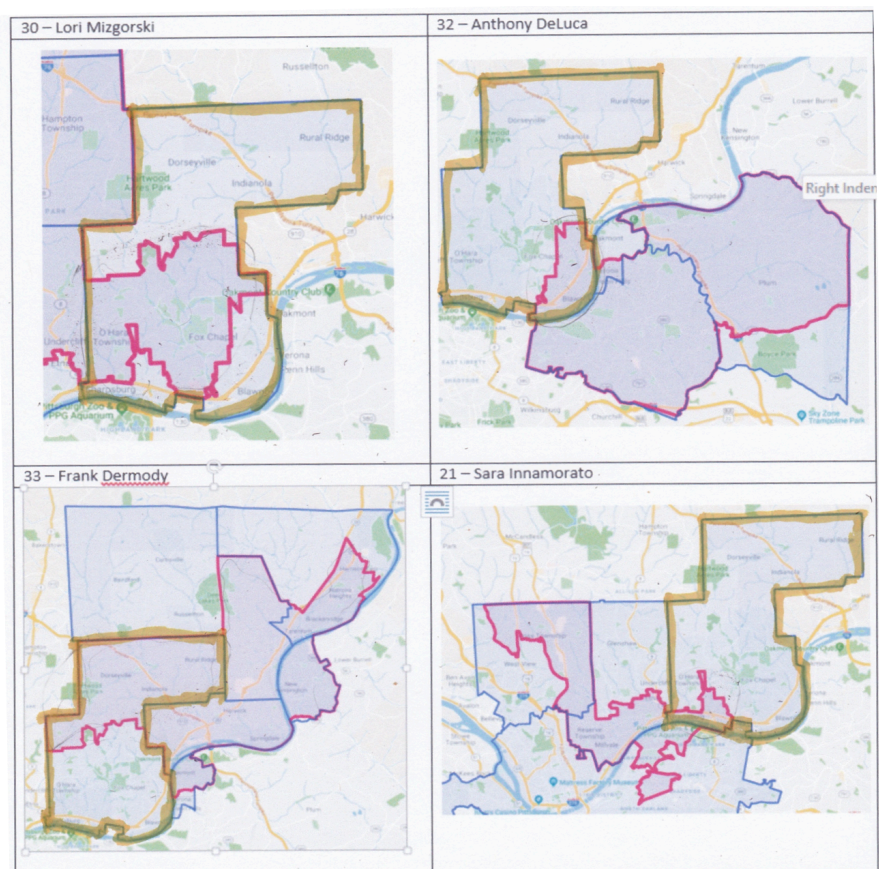
Remarks to Legislative Reapportionment Commission – September 25, 2021

My name is Suzanne Broughton. I live in a retirement community in the Town of McCandless. I am a past president of the League of Women Voters of Greater Pittsburgh. Since 2016, I have given 53 presentations for Fair Districts PA. However, I speak here only for myself.

At the age of 84, I leave to younger generations the task of telling you the details of the maps they need in their future. Through my professional career in physics and in computer software, I know the importance of well-defined and well-implemented processes to reach defensible conclusions. I will use that experience to look back at two maps that I see as examples of poor implementation.

Keeping “Communities of Interest” together is not a requirement for redistricting. But in the last decade, that consideration has become important to many citizens. One such community is a school district.

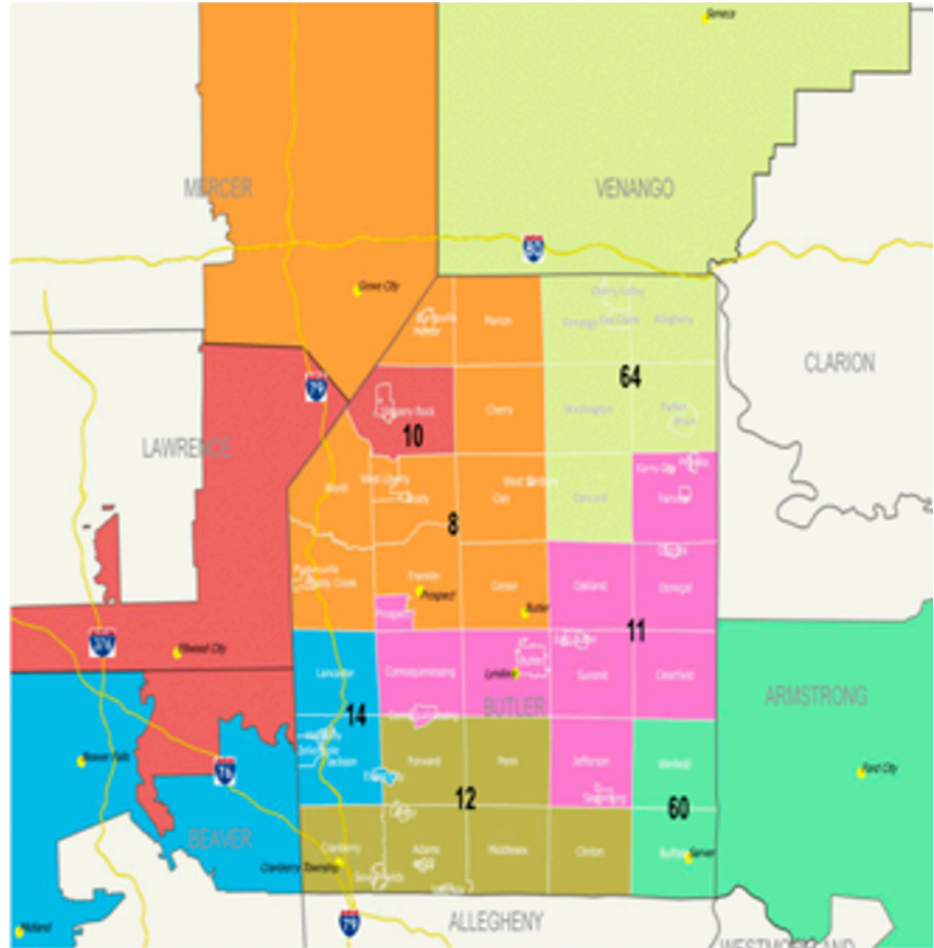
In the 2011 redistricting, the LRC treated the Fox Chapel School District as shown in these maps. The school district is outlined in yellow, the House districts in red. Start in the lower left corner box to see that the northern part of the school district is in House District 33. In the upper left corner box, see that most, but not all, of the southern part of the school district is in House District 30. The two boxes on the right show that



there are small portions of the school district in House Districts 32 and 21. A division among several legislators who may be only vaguely aware that part of the school district is in their House district makes it impossible for school officials to have a strong voice in Harrisburg. It's not a formal requirement, but I urge this commission to give school districts serious consideration.

Remarks to Legislative Reapportionment Commission – September 25, 2021

My second example is the House districts in Butler County and the surrounding counties. Take a quick look at this map. How many districts are in whole or in part in Butler County? Did you count seven? Districts 11 and 12 are completely within Butler County. Five districts are partially within Butler County but wander through five other counties. Article II, Section 16 of the Pennsylvania Constitution states “[u]nless absolutely necessary no county ...



shall be divided in forming either a senatorial or representative district.” If there was any absolute necessity for this division of Butler County, I fail to see it. I have never seen an explanation for it. This actual, formal requirement – a real provision of the Pennsylvania constitution – has been ignored by previous commissions.

Apparently, the people who wrote the Commission process into Article II, Section 17 in 1968, and specified the mapping requirements of Section 16, thought that their well-defined process was sufficient to produce fair maps. But, as I have said, a process must be well-implemented to produce acceptable results. In 2011, the commission's implementation did not prioritize districts that were fair and constitutional.

This 2021 commission has made a huge improvement through its openness to citizens. As you draw the maps, your implementation must pursue the goal of districts that are fair and constitutional..

Thank you for your time. I offer my best wishes as you proceed in the difficult task that you have undertaken.